

2SB/15
.29A67

Ref 12/11

ANGELICA NURSERIES

Growers of Fine Plants

LIBRARY
REC
★ SEP 7 - 1954
U. S. Department of Agriculture



U.S. DEPT. OF AGRICULTURE
NAT'L AGRIC. LIBRARY
RECEIVED

Wholesale List

FALL 1954

SPRING 1955

APR 22 '85

PROCUREMENT SECTION
CURRENT SERIALS

MOHNTON R. D. No 1, PA.

Located on Route 73

Phone Reading 2-3983

Introduction

Once again it is our pleasure to present you with a copy of our new wholesale list.

As always, our endeavor is to grow the finest plants possible. By selecting the better type plants of all varieties and propagating from them we believe we have accomplished much toward this end. All our plants receive the best possible care: they are root pruned and transplanted so as to develop a fine root system, they are sheared, sprayed, fed, cultivated and watered to assure compact clean plants. Your orders are dug and handled by experienced men in the very finest manner. Our every effort is directed toward developing and growing good heavy plant material offered at the lowest possible price and to merit your confidence and good will.

A price list is indeed a very poor indication of quality. We are offering quality plant material at a fair price, not "selling price" and feel that the value of a plant is seen rather than described. We urge you most cordially to visit our nurseries and inspect our acreage of plant materials. This year in particular we can offer outstanding blocks of many varieties. Our nurseries are located on Rt. 73, three miles south of Reading, Pa. at the village of Angelica.

Yours respectfully,

ANGELICA NURSERIES

Thomas J. Kohl, Jr., Owner

Member:

Pennsylvania Nurserymen's Association

American Rhododendron Society

Holly Society of America

Terms and Conditions

This list cancels all previous quotations and prices listed herein are subject to change without notice. Material offered subject to prior sale.

All prices are f.o.b. our nurseries.

Quantities: 5 to 24 at 10 rate, 25 and more at 100 rate except as otherwise stated. Less than 5 plants of a kind and size—50c additional per plant.

All stock when especially selected in the nursery will be sold at prices commensurate with the values of the specimens chosen.

Terms: Cash in advance unless satisfactory arrangement is made before pickup. 2% discount allowed. To those establishing accounts with us terms are 2% 10 days, net 30 days.

We express or imply no warranty as to productiveness of life of stock. We assume no liability for delay or failure in filling orders due to strikes, accidents, crop failures or other causes beyond our control. It is mutually agreed that our liability for untruthfulness to name is confined to free replacement or refund of purchase price.

Claims must be made in writing within five days of receipt of goods.

Evergreens

ABIES (Fir)	each per 10	each per 100
Pseudotsuga douglasi (Douglas Fir)		
4 to 5 ft.	5.50	
5 to 6 ft.	7.00	
6 to 7 ft.	8.50	
7 to 8 ft.	9.75	
8 to 9 ft.	10.75	
9 to 10 ft.	12.00	

CHAMAECYPARIS (Falsecypress)

Obtusa (Hinoki Falsecypress) Narrow irregular pyramid of rich dark green foliage.

4 to 5 ft.	4.50	4.25
5 to 6 ft.	5.50	5.25

Obtusa Gracilis. Picturesque irregular pyramidal.

10 to 11 ft.	11.50
-------------------	-------

Pisifera (Sawara Falsecypress) Broad pyramids of lacy, pale green foliage.

9 to 10 ft.	11.50
10 to 11 ft.	12.50

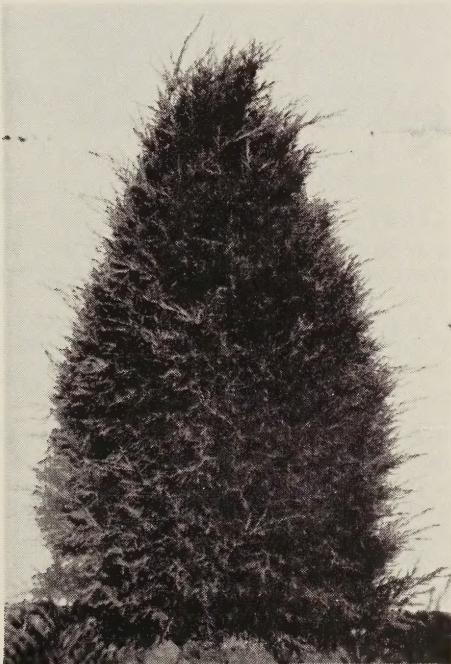
JUNIPERUS (Juniper)

Excelsa Stricta (Spiny Greek Juniper) Narrow and columnar. Dense blue foliage. Formal shape.

3½ to 4 ft.	3.75	3.50
------------------	------	------

Glauca hetzi (Hetz's spreading juniper) Vigorous growing semi-erect spreader with pleasing blue-gray foliage.

18 to 24 inch	2.75
24 to 30 inch	3.75
4 ft. by 4 ft.	8.00



Upright Juniper Hetzi, 3 ft.

	each per 10	each per 100
Glauca Hetzi Upright—Hetz's spreading juniper trained to pyramidal form.		

2½ ft.	3.00	2.75
3 ft.	3.50	3.25

Kosteri (Spreading—resembles Pfitzer Juniper)

2 ft.	3.50	
------------	------	--

Meyeri (Meyer Juniper) Silver-blue foliage with an occasional touch of pinkish-red. Irregular habit of growth.

12 to 15 inch	2.00	1.75
15 to 18 inch	2.75	2.50
18 to 24 inch	3.25	3.00

Pfitzeriana (Pfitzer Juniper) Semi-erect spreader with plume-like foliage.

18 to 24 inch	3.00	
2½ ft.	3.75	
3 ft.	4.95	
3½ ft.	6.00	
4 ft.	8.00	



Block of spreading yews, photographed August 11, Twice pruned this year, fertilized and irrigated.

TAXUS (Yew)

Baccata repandens (English yew) Low, spreading horizontal branches. Dark blue-green foliage.

15 to 18 inch	3.75	
2 ft.	4.95	
3 ft.	8.75	
3½ ft.	9.75	

Cuspidata (Spreading Japanese Yew) Dependable, bushy, spreading yew.

10 to 12 inch	1.50	1.35
12 to 15 inch	2.00	1.75
15 to 18 inch hvy.	3.00	2.75
18 to 24 inch hvy.	3.75	3.50
2 to 2½ ft.	4.90	4.65
2½ to 3 ft. hvy.	6.75	6.50
3 to 3½ ft. hvy.	8.00	7.75

Sizes up to 7 ft. spread. Prices on request.



Very fine block of Taxus uprights, photographed August 11. Pruned twice this year, fertilized and irrigated.

	each per 10	each per 100
Cuspidata Capitata (Upright Japanese Yew)		
Symmetrical, broad pyramidal yew.		
4 to 4½ ft.	7.50	
4½ to 5 ft.	10.50	
5 to 5½ ft.	14.00	
5½ to 6 ft.	18.00	
6 to 6½ ft.	20.00	
6½ to 7 ft.	22.00	
7 to 7½ ft.	24.00	
8 to 9 ft.	28.00	

Limited number of plants available in larger sizes. Prices on request.

Cuspidata Nana (True Brevifolia) Slow-growing, low and irregular outline.

9 to 12 inch	2.50
12 to 15 inch	3.00
15 to 18 inch	3.75
18 to 21 inch	4.50

each each
per 10 per 100

Cuspidata Nana (Brevifolia type) Dense compact type of Brevifolia. Semi-spreading habit, somewhat faster than true brevifolia. Good dark green color.

15 to 18 inch	3.25	3.00
18 to 24 inch	4.25	4.00
2 to 2½ ft.	5.75	5.50
2½ to 3 ft.	7.75	7.50



Taxus Intermedia, 15 to 18 inch.

Intermedia (hybrid yew) Cross between bacata repandens and cuspidata. Low, compact, globular. Upright branches. One of the best.

12 to 15 inch	2.75	2.50
15 to 18 inch	3.50	3.25

Media #6—One of the best spreading yews.

2 ft. heavy	5.50	5.25
2½ ft. heavy	6.25	6.00
3 ft. heavy	7.50	7.25

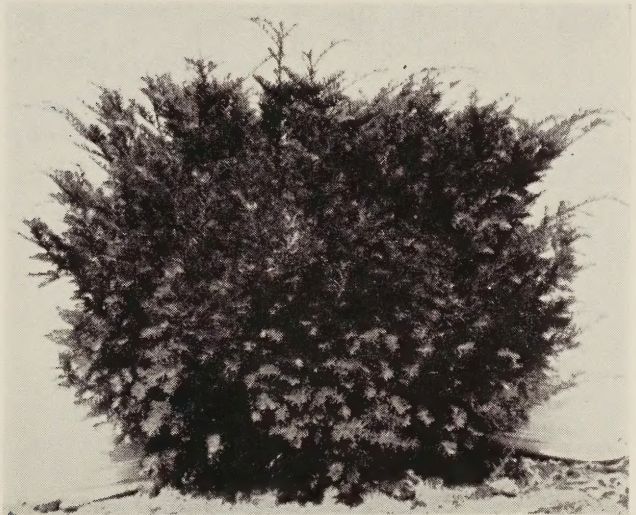
Media #8—We consider this the best spreading, globular yew. Slow growing, very compact. Foliage resembles cusp. nana.

15 to 18 inch	3.50	3.25
18 to 24 inch	4.25	4.00
2 ft.	5.50	5.25
2½ ft. heavy specimen	7.00	6.75
3 ft. heavy specimen	8.75	8.50
3½ ft. heavy specimen	9.75	9.50
4 ft. heavy specimen	12.50	12.00



Taxus Media #8, 3½ ft. heavy specimen.

	each per 10	each per 100
Media #18—Growth similar to <i>T. cuspidata</i>. Foliage a shade lighter green. Very graceful plant.		
15 to 18 inch	3.25	3.00
18 to 24 inch	4.00	3.75
full 2 ft.	4.75	4.50
3 ft. heavy specimen	7.75	7.50
3½ ft. heavy specimen	8.75	8.50
4 ft. heavy specimen	10.75	10.50



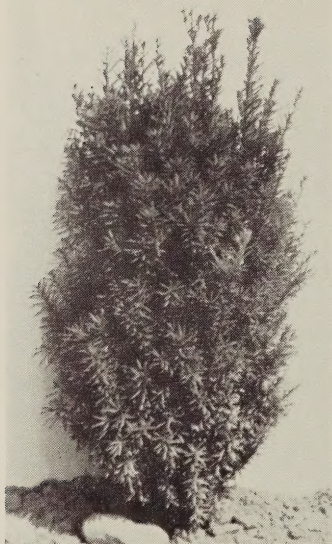
Taxus Media #18, 3½ ft. heavy specimen.

Media Browni (Brown's Yew) Compact growing upright globe with dark green foliage.

2 ft. W. by 2½ to 3 ft. H. heavy	5.75	5.50
2½ ft. W. by 2½ to 3 ft. H. heavy	6.75	6.50
3 ft. W. by 2½ to 3 ft. H. heavy	8.00	7.75

Media Hatfieldi (Hatfield Yew) Broad upright columnar yew.

3 ft. heavy	6.75	6.25
3½ ft. heavy	7.75	7.50



Taxus hicksi, 2-2½ ft. heavy.

Media Hicksi (Hick's yew) Upright columnar yew with very dark glossy foliage. An abundance of bright red berries.

	each per 10	each per 100
2 to 2½ ft. thin	2.50	2.25
2½ to 3 ft. thin	3.00	2.75
3 to 3½ ft. thin	3.50	3.25
3½ to 4 ft. thin	4.00	3.75
2 to 2½ ft. heavy	4.00	3.75
2½ to 3 ft. heavy	5.00	4.75
3 to 3½ ft. heavy	7.00	6.75
3½ to 4 ft. heavy	9.00	8.75
4 to 4½ ft. heavy	11.50	
6 ft. specimen	18.50	

Media Kohli. Darkest green yew with heavy foliage and stems. Grows like *Browni*—upright globe.

15 to 18 inch heavy	3.50	3.25
18 to 24 inch heavy	4.50	4.25



Taxus Vermeulen, 4½ ft. heavy specimen.

each each
per 10 per 100

Media Vermeulen. Upright brevifolia with compact dense growth. Broad base. We consider this the best upright yew.

2	to 2½ ft.	4.75	4.50
2½	to 3 ft.	5.50	5.25
3	to 3½ ft.	6.50	6.25
4	ft. heavy specimen	14.00	
4½	ft. heavy specimen	16.00	
5	ft. heavy specimen	18.00	



We believe we have very fine blocks of all types of arborvitae. Plants have been well sheared, fertilized and watered. The above is a block of elegantissima, photographed August 11.

THUYA (Arborvitae)

Occidentalis Americana (American arborvitae). Broad-based pyramidal.

3½	to 4 ft.	4.00	3.75
4	to 4½ ft.	4.50	4.25
4½	to 5 ft.	4.75	4.50
5	to 5½ ft.	5.25	5.00
5½	to 6 ft.	6.75	6.50
6	to 6½ ft.	7.50	7.25
6½	to 7 ft.	8.50	8.25
7	to 7½ ft.	9.50	9.25
7½	to 8 ft.	10.50	10.25

Occidentalis Douglasi. Similar in growth to American arborvitae. Yellow tip growth.

12 to 14 ft.	each 18.00	16.00
--------------	-------	------------	-------

Occidentalis Elegantissima (Gold-tipped arborvitae) Hardy, good foliage, tipped golden in summer. The best upright tree today.

2½	to 3 ft.	2.50	2.25
3	to 3½ ft.	3.00	2.75
3½	to 4 ft.	3.75	3.50
4	to 4½ ft.	4.50	4.25
4½	to 5 ft.	5.50	5.25
5	to 5½ ft.	6.00	5.75
5½	to 6 ft.	6.50	6.25
12 to 13 ft.	specimens ..	each	30.00	

each each
per 10 per 100

Occidentalis Globosa (Globe arborvitae) Round, bushy and compact growing.

2 ft. wide by 30 to 36 inch high	2.75	2.50
2 to 2½ ft. wide by 3 to 3½ ft. high	3.25	3.00

Occidentalis Pyramidalis (Pyramidal arborvitae) Tall, narrow growing with bright green foliage.

4 to 4½ ft.	3.50	3.25
4½ to 5 ft.	4.00	3.75
5 to 5½ ft.	4.25	4.00
5½ to 6 ft.	4.75	4.50
12 to 14 ft.	each 12.50	



Thuja Spiralis, 4 ft.

Occidentalis Spiralis (Spiral Arborvitae) Compact pyramidal with curved fern-like foliage. A beautiful plant.

3½ to 4 ft.	3.75	3.50
4 to 4½ ft.	4.25	4.00
4½ to 5 ft.	5.00	4.75
6 ft. heavy specimens	7.75	
7 ft. heavy specimens	8.75	
8 ft. heavy specimens	9.75	

Occidentalis Wari (Ware arborvitae) Broad pyramidal with rich blue-green foliage. Slow growing.

2½ ft.	2.50	2.25
3 ft.	3.00	2.75



Tsuga Canadensis, 5 ft. Our hemlock have been sheared twice this year and we believe they are of the finest.

	each	each
	per 10	per 100
TSUGA (Hemlock)		
Canadensis (Canadian hemlock) Graceful with rich, deep green foliage.		
3 to 3½ ft.	4.85	4.60
3½ to 4 ft.	5.75	5.50
4 to 4½ ft.	6.50	6.25
4½ to 5 ft.	7.00	6.75
5 to 5½ ft.	8.50	8.25
5½ to 6 ft.	9.75	9.50
6 to 6½ ft.	11.00	10.75
6½ to 7 ft.	12.50	12.25
7 to 7½ ft.	13.75	13.50
7½ to 8 ft.	15.00	14.75
8 to 8½ ft.	16.75	16.50
8½ to 9 ft.	18.00	17.75

Broadleaf Evergreens

each each
per 10 per 100

GABLE'S AZALEAS

Unsurpassed for hardiness in this area. Developed especially for climatic conditions by Mr. Joseph Gable.

#111—Upright growing, Salmon flowers

12 to 15 inch	2.35	2.25
15 to 18 inch	3.25	3.00
18 to 21 inch	3.75	3.50

#145—Large white flowers with just a touch of pink

12 to 15 inch	2.10	2.00
15 to 18 inch	3.25	3.00

#38—Double pink, late blooming

12 to 15 inch	2.75	2.50
---------------------	------	------

#A2—Rosebud—Pink flowers resembling miniature roses. Late bloomer.

12 to 15 inch	3.25	3.10
15 to 18 inch	3.85	3.70

#153—Deep Red

15 to 18 inch	3.10	3.00
18 to 24 inch	3.85	3.75

#185—Pink

12 to 15 inch	2.10	2.00
15 to 18 inch	3.25	3.00

INDICA ALBA Azalea

Hardy, bearing large pure white flowers.

15 to 18 inch	3.25	3.10
18 to 24 inch	3.75	3.60

KAEMPFERI HYBRIDS

Free flowering and hardy. Evergreen.

Carmen large pink flowers.

18 to 21 inch	3.75	3.60
21 to 24 inch	4.25	4.00

	each per 10	each per 100
Fedora. Large deep rose flowers in May.		
18 to 21 inch	3.75	3.60
21 to 24 inch	4.25	4.00

Mary. Large pink flowers.		
15 to 18 inch	2.75	2.60

Othello. Free flowering bright orange-red blossoms.		
15 to 18 inch	3.40	3.20
18 to 21 inch	4.00	3.80
21 to 24 inch	4.75	4.60

KURUME AZALEAS. Free-flowering evergreen and display a handsome array of bloom in Spring.

Amoena. Double rosy purple flowers. Early blooming and hardy.		
12 to 15 inch	2.50	2.40
15 to 18 inch	3.25	3.10
18 to 24 inch	4.10	4.00

Flame. Very showy madder-red flowers.		
15 to 18 inch	3.40	3.20
18 to 21 inch	4.00	3.80

Hinodegiri. Dense, compact. Brilliant scarlet flowers borne profusely.		
12 to 15 inch	2.50	2.40
15 to 18 inch	3.25	3.15
18 to 21 inch	4.50	4.35
21 to 24 inch	5.50	5.35

Hinomayo. Beautiful soft pink flowers.		
18 to 24 inch	4.50	4.40

MOLLIS AZALEAS

Extremely hardy deciduous azalea bearing very large orange thru salmon and red flowers.

15 to 18 inch	2.75	2.50
18 to 24 inch	3.50	3.25

PONTICUM AZALEA

Ghent azaleas—yellow flowering.

18 to 21 inch	3.50	3.40
21 to 24 inch	3.75	3.60

SCHLIPPENBACHII

Large flowers pale to rose pink. Early.

15 to 18 inch	2.75	2.50
18 to 24 inch	3.50	3.25

BERBERIS

Julianae—Strong growing evergreen with yellow flowers. Foliage turns brilliant color in fall.

15 to 18 inch	2.50
18 to 24 inch	3.00

each each
per 10 per 100

CAMELLIAS

Sasanqua. Fall blooming Camellias.

Annette—single white with rose margin.

Cleopatra—deep rose pink often double.

Crimson Bride—single crimson.

Maiden Blush—single clear delicate pink.

Rosea—single pink to rose.

Mine-no-yuki—double pure white.

Negisheko—single large deep rich pink.

Setsuggekka—single white with pink edging.

5 inch pots, 18 to 24 inch 2.75 2.50

EUONYMOUS (Wintercreeper)

Patens (Seiboldi) spreading—good in shade. Profuse in flower and fruit.

2½ to 3 ft. heavy 3.75



Ilex Convexa, 15-18 inch.

ILEX (Holly)

Convexa (bullata) (Convexleaf holly) slow growing; small glossy boxwood-like leaves.

12 to 15 inch	2.50	2.25
15 to 18 inch	2.75	2.60
18 to 24 inch	4.00	3.85
2 to 2½ ft.	5.50	5.25
2½ to 3 ft.	6.75	6.60
full 3 ft.	7.50	7.25
3 to 3½ ft.	8.50	8.25
full 3½ ft.	9.50	9.25

Crenata—small leaf resembling microphylla. We think it is better.

18 to 24 inch	4.75
24 to 30 inch	6.50



Ilex Crenata, 15-18 inch resembling *rotundifolia*.

each each
per 10 per 100

Crenata—resembling rotundifolia. We think it is better.

18 to 24 inch	4.25	
24 to 30 inch	5.75	

Crenata upright — excellent upright bearing glistening black berries.

3 ft.	6.00	
3½ ft.	7.00	
4 ft.	8.00	
4½ ft.	9.00	
5 ft.	10.00	

Aquifolium (English holly)

5 inch pots—24 to 30 inch	4.00	3.75
5 inch pots—30 to 36 inch	4.50	4.25

Aqui-pernyi Brilliant

5 inch pots—18 to 24 inch	3.50	3.25
5 inch pots—24 to 30 inch	3.80	3.60

Opaca (American Holly)

female

6 inch pots—18 to 24 inch	3.00	2.75
6 inch pots—24 to 30 inch	4.00	3.75

Field grown, male and female

18 to 24 inch	3.50	3.25
2 to 2½ ft.	5.00	4.75
2½ to 3 ft.	6.00	5.75
3 to 3½ ft.	7.00	6.75

We are growing extensively, many rare and unusual varieties of broadleaved evergreens including what we believe to be one of the most complete collections of American, English and Chinese Hollies in the country. Just a few of these are listed here and we urge you to write for our separate complete list of potted English, Chinese and American hollies.

each each
per 10 per 100

MAGNOLIA

Grandiflora (Southern Magnolia) Evergreen, producing large pure white flowers.

6 inch pots—3½ to 4 ft.	4.00	3.75
in wire baskets		
3 ft.	7.00	
3½ ft.	9.00	
4 ft.	12.00	



Field of Pieris japonica photographed August 11.

PIERIS (Andromeda)

Japonica (Japanese Andromeda) Attractive evergreen foliage. Terminal growth frequently reddish-bronze in color. Profusion of clustered white blooms in May.

6 to 12 inch transplants, peat ball	.45	.40
12 to 15 inch	2.25	2.00
15 to 18 inch	3.25	3.00
18 to 24 inch	4.25	4.00
2 to 2½ ft.	5.50	5.25
2½ to 3 ft.	6.50	6.25
3 to 3½ ft.	7.50	7.25



Pieris Japonica, 3 ft.

	each per 10	each per 100
PYRACANTHA		
Graberii. Red berries.		
2 to 3 ft. staked in wire baskets	3.75	3.50

RHODODENDRON

Catawbiense Grandiflora.

12 to 15 inch—own root	2.00	1.75
15 to 18 inch—own root	2.50	2.25
18 to 21 inch—own root	3.00	

Roseum Elegans.

6 to 12 inch rooted cuttings; peat ball90	.75
12 to 15 inch—own root	2.00	1.75
15 to 18 inch—own root	2.50	2.25
18 to 21 inch—own root	3.00	2.75

Specimen quality

18 to 21 inch	4.75	4.50
21 to 24 inch	5.50	5.25
24 to 30 inch each	7.75	7.25
30 to 36 inch each	10.00	9.50

We also have many other varieties in limited quantities. Sizes 6 inch to 2 foot.

VIBURNUM

Burkwoodi—An improvement over *V. Carlesi* producing delightfully fragrant, waxy pink flowers in small round clusters.

18 to 24 inch	2.75
---------------------	------

Shade Trees

each each
per 10 per 100

BETULA (Birch)

Populifolia (Gray Birch) Chalky, ashywhite bark, hardy.

1½ to 1¾ inch cal. 10 to 12 ft. bare root	5.25	5.00
1¾ to 2 inch. cal. 12 to 14 ft. bare root	6.25	6.00
3 inch cal. 16 to 22 ft. tall bare root	12.00	11.50
4 inch cal. 20 to 26 ft. tall bare root	16.00	15.50

Young's Weeping.

5 to 6 ft. in wire baskets	5.75
----------------------------------	------

GINKGO (Salisburia)

Biloba (Maidenhair-tree) Rugged single trunked tree with fan shaped leaves.

2½ inch cal., 12 to 15 ft. tall bare root	10.00
3 inch cal., 14 to 16 ft. tall bare root	12.50
3½ inch cal., 16 to 18 ft. tall bare root	14.50
4 inch cal., 16 to 18 ft. tall bare root	16.50

QUERCUS (Oak)

Palustris (Pin Oak) Symmetrically pyramidal tree.

3½ inch cal. bare root	each 24.00	22.00
4 inch cal. bare root	each 28.00	26.00
4½ inch cal. bare root	each 30.00	28.00
5 inch cal. bare root	each 35.00	33.00

ULMUS (Elm)

Americana (American Elm) Graceful, tall-trunked clean shade tree.

3½ inch cal. bare root	14.00	13.50
4 inch cal. bare root	16.00	15.50
4½ inch cal. bare root	18.00	17.50
5 inch cal. bare root	20.00	19.50

Flowering Trees

	each per 10	each per 100
AESCULUS (Horsechestnut)		
Carnea Brioti—Red flowers, rare.		
4 to 5 ft. in wire baskets	6.00	5.75

CERCIS (Judas-tree)

Canadensis (Redbud) Tall spreading tree producing rosy-purple flowers before heart-shaped leaves in April.

6 to 8 ft. bare root	3.75
8 to 10 ft. bare root	4.75
3 to 3½ inch cal. bare root	12.00
3½ to 4 inch cal. bare root	15.00

CORNUS (Dogwood)

Florida (white dogwood) Low, spreading head; horizontal branches.

2 to 3 ft. bare root	1.75	1.50
3 to 4 ft. B&B	3.25	3.00
4 to 5 ft. B&B	4.50	4.25
5 to 6 ft. B&B	5.50	5.00
6 to 8 ft. B&B	7.00	6.75

Florida Rubra (Pink dogwood)

3 to 4 ft. hvy. B&B	4.90
4 to 5 ft. hvy. B&B	6.75
5 to 6 ft. hvy. B&B	9.50
6 to 7 ft. hvy. B&B	13.50
7 to 8 ft. hvy. B&B	16.50

CRATAEGUS (Hawthorn)

Paul's Scarlet—double red.

6 to 8 ft. B&B	9.50
8 to 10 ft. in wire baskets	10.50

MAGNOLIA

Grandiflora (Southern Magnolia) Evergreen, producing large pure white flowers.

6 inch pots, 3½ to 4 ft.	4.00	3.75
3 ft. in wire baskets	7.00	
3½ ft. in wire baskets	9.00	
4 ft. in wire baskets	12.00	

Lennei (red) Profusion of rosy flowers borne before the leaves.

5 to 6 ft.	8.50
6 to 7 ft.	10.50
7 to 8 ft.	12.50

Rustica Rubra—Vigorous grower producing rose red blooms.

5 to 6 ft.	8.50
6 to 7 ft.	10.50

each each
per 10 per 100

Soulangiana (Pink Saucer magnolia) One of the earliest blooming. Huge pink flowers in May.

3½ to 4 ft.	4.50	4.00
4 to 5 ft.	5.00	4.75
5 to 6 ft.	6.50	6.25
6 to 7 ft.	8.50	8.25

MALUS (Flowering Crabapple)

Eleyi (rose purple flowers and red-purple foliage.)

6 to 8 ft. heavy in wire baskets 9.75

Hopa—red flowers.

6 ft. in wire baskets	6.50
6 to 8 ft. heavy in wire baskets	9.75
6 to 8 ft. B&B	9.75

Sargenti. Hardy, low with white flowers and profusion of fall fruit.

3 to 4 ft. heavy B&B	6.00
4 to 5 ft. heavy B&B	8.00
5 to 6 ft. heavy B&B	10.00

PRUNUS

Cherry Kwanzan. Upright growth, double pink flowers.

4 to 5 ft. B&B	7.00
6 ft. in wire baskets	9.75

Peach. Double red.

5 to 6 ft. in wire baskets	6.00
----------------------------------	------

Plum Blireiana, pink.

4 ft. in wire baskets	5.50
-----------------------------	------

Plum Thundercloud, white.

4 ft. in wire baskets	5.00
-----------------------------	------

WISTERIAS Hybrid long-flowering tree wisterias

floribunda Rosea (pink)

floribunda Violacea plena (double violet)

floribunda longissima (light purple)

6 ft. in wire basketseach	12.50
--------------------------------	-------

Shrubs

each each
per 10 per 100

COTONEASTER (Quinceberry)

Divaricata (Upright growth with spreading branches. Pink flowers in June and an abundance of red fruit in fall. Leaves turn attractive red color in Autumn).

2 ft. in 6 inch pots	each	2.00
5 to 6 ft. heavy bare root	each	4.00
5 to 6 ft. heavy B&B	each	8.00



Field of Euonymous.

EUONYMOUS (Burningbush)

Alatus (Winged euonymous) Corkbark, beautiful red foliage in autumn and an abundance of red berries.

2½ to 3 ft. reg. grade bare root	1.50	1.25
2½ ft. heavy specimen quality B&B	2.25	2.00
3 ft. heavy specimen quality B&B	2.75	2.50
3½ ft. heavy specimen quality B&B	3.25	3.00

Compacta (More compact, slower growing than **E. Alatus**—beautiful red autumn foliage and red berries in abundance.)

2½ to 3 ft. reg. grade bare root	2.25	2.10
2 ft. extra heavy specimen B&B	2.50	2.35
2½ ft. extra heavy specimen B&B	3.00	2.85
3 ft. extra heavy specimen B&B	3.85	3.70
3½ ft. extra heavy specimen B&B	4.25	4.00
4 ft. extra heavy specimen B&B	5.25	5.00



Euonymus compacta, 2 ft.

each each
per 10 per 100

LAGERSTROEMIA (Crapemyrtle)

William Toovey, best red.

2½ to 3 ft.

in wire basketseach 4.50

RHODOTYPOS (Jetbead)

Kerrioides. Very hardy shrub producing white flowers and black berries.

2 to 3 ft. bare root 1.00 .75

3 to 4 ft. bare root 1.50 1.25

SPIREA

Anthony Waterer—rosy-crimson flowers.

18 to 24 inch heavy, bare root90 .80

Thunbergi — Bushy, slender arched branches producing white flowers before the leaves in March or April.

2 to 3 ft. heavy, bare root 1.00 .75

VACCINIUM (Blueberry)

3 ft. heavy specimen 4.50 4.25

3½ ft. heavy specimen 5.00 4.75

4 ft. heavy specimen 5.50 5.25

4½ ft. heavy specimen 6.00 5.75

WISTERIAS—Japanese long-flowering varieties.

floribunda Rosa—pink.

floribunda longissima—light purple.

floribunda longissima Alba—white.

Venusta alba—silky white

5 yr. grafts, 6 ft. heavy staked
in wire baskets each 8.50

We also have, in limited quantities, many varieties too numerous to list. Send us your want list for special quotations. We may have what you are looking for.

